



UNIVERSITY COLLEGE
Illinois State University

Welcome to your Preview Advisement Session!

Students, please be prepared to discuss the following information with your Advisor:

- Major or Career of Interest
- Transfer Work from Community College
- Dual Credit Courses from High School
- Advanced Placement (AP) Scores, International Baccalaureate or Proficiency Exams
- COMPASS Math Placement Scores

*****Please turn off your cell phones. Thank you!*****

We help students succeed

Meet your Advisement Team:

Please write down our contact info on your Advising Syllabus and Planning Sheet

Group L:

- Advisor Name
- Advisor Email:
- Phone: 309-438-7604
- Office Location: Fell 340

Group M:

- Advisor Name
- Advisor Email:
- Phone: 309-438-7604
- Office Location: Fell 340

Peer Name

Academic Peer Advisor

We help students succeed

Your Illinois State Advising Resources

Advising Syllabus:

- Outline of Advisement Expectations at Illinois State
- Timeline of important advisement events
- Checklist of appointments and requirements related to advisement

iCampus & Catalog:

- Registration system for Fall, Spring and Summer courses
- Personalized “Progress Towards My Degree”
- Ability to monitor financial aid, grades, GPA, email and more

Planning Worksheet:

- Worksheet created to assist you with course selection
- A place to write notes about this presentation
- Quick reference for placement information (Math, English, etc)

We help students succeed

Mentoring

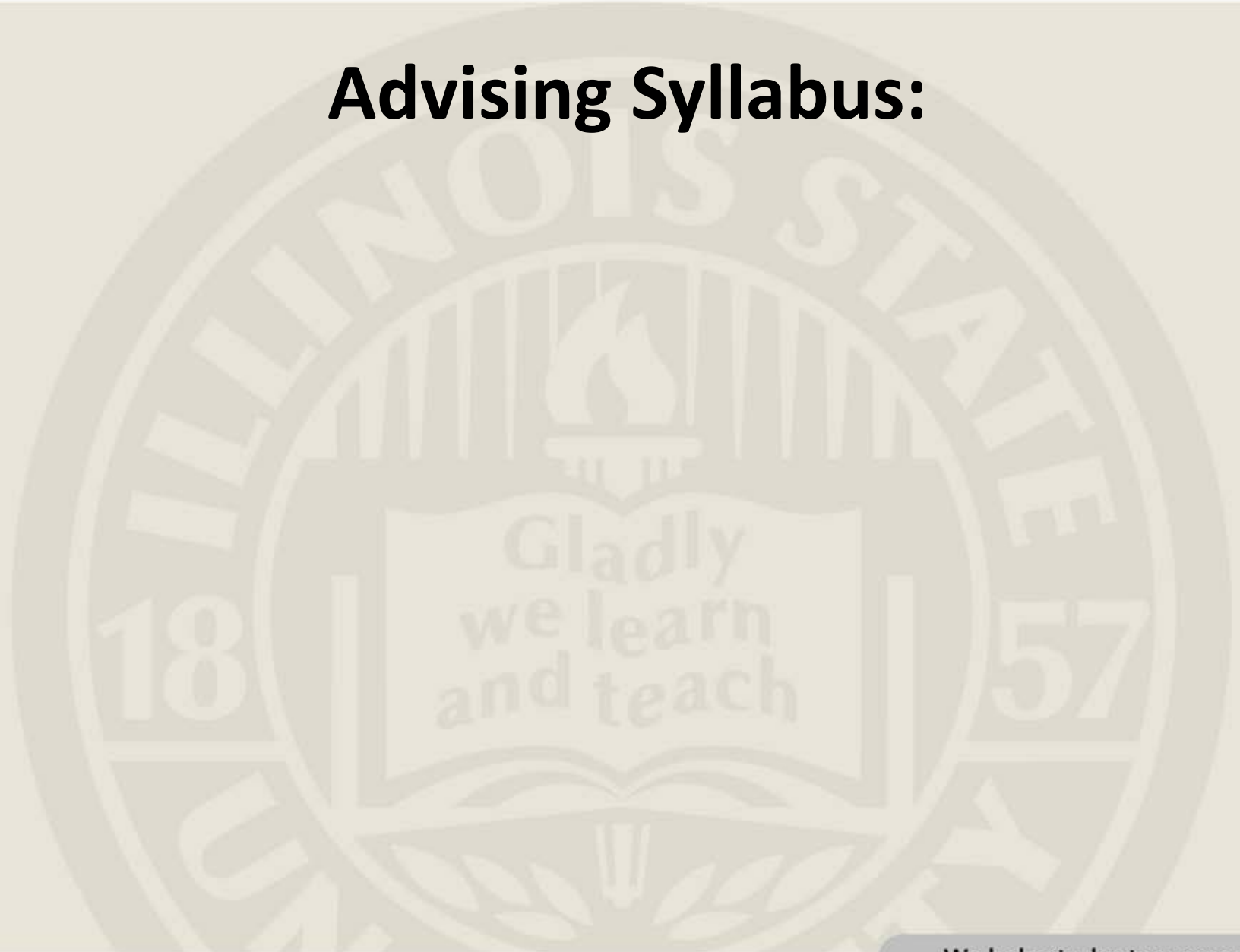
Testing

University College

Comprehensive academic support programs

Teaching

Advising Syllabus:



We help students succeed

2010/2012 Catalog

What you can find in your catalog...

- Degree Requirements – Page 49
 - Complete General Education
 - Graduate with a declared Major
 - University GPA vs. Major GPA
 - Bachelor of Science vs. Bachelor of Arts
- General Academic Policies – Page 54
- College, Department/School, Major, Sequence

We help students succeed

2010/2012 Catalog

General Education – Page 64

- General Education Shared Learning Objectives
 - Critical Inquiry & Problem Solving
 - Public Opportunity
 - Diverse & Global Perspectives
 - Life-Long Learning
- General Education consists of Inner, Middle and Outer Core
- General Education Exemption by Major – pg 64
- Global Studies Courses in Outer Core – pg 67

We help students succeed

2010/2012 Catalog

Course Descriptions and Prerequisites

Turn to page 204 in your catalog:

120 FINITE MATHEMATICS

IC-M

4 sem. hrs.

Linear functions, matrices, systems of linear equations, sets and counting, probability, statistics, and mathematics of finance. Department-approved graphing calculator required. May not be taken under the CT/NC option. Not for credit major/minor. Prerequisite: Mathematics placement or C or better in MAT 119.

121 APPLIED CALCULUS

MC-QR

4 sem. hrs.

We help students succeed

Planning Worksheet:

Inner Core

Inner Core General Education – Undergraduate Catalog Page 65

Inner Core General Education – Undergraduate Catalog Page 65				
IC Required: <i>ENG/COM</i>	Math		IC-NS <i>Inner Core Science</i>	
COM 110 – 3 hrs ENG 101 – 3 hrs ENG 101.10 – 3 hrs	<i>Prerequisite Courses:</i> MAT 102 – 4 hrs (CR/NC) MAT 104 – 3 hrs (CR/NC) MAT 119 – 3 hrs MAT 108 – 2 hrs MAT 144 – 4 hrs	<i>Inner Core Math Courses:</i> MAT 113 – 4 hrs MAT 130 – 3 hrs MAT 120 – 4 hrs MAT 145 – 4 hrs	<i>Natural Science:</i> BSC 101 – 3 hrs CHE 102 – 3 hrs GEO 102 – 3 hrs PHY 102 – 3 hrs	<i>Natural Science Alternatives:</i> BSC 197 – 4 hrs CHE 110/112 – 5 hrs CHE 140 – 4 hrs PHY 105 – 4 hrs PHY 108 – 5 hrs PHY 110 – 4 hrs
<small>Middle Core General Education – Catalog, Page 65-66: Remember to check for your Gen Ed Exemption</small>				
<small>MC – QR <i>Middle Core Quantitative Reasoning</i></small>	<small>MC – LH <i>Middle Core Language in the Humanities</i></small>	<small>MC-UST: <i>Middle Core United States Traditions</i></small>	<small>MC-ICL: <i>Middle Core Individuals & Civic Life</i></small>	<small>MC-IS: <i>Middle Core Individuals & Society</i></small>
<small>PREREQUISITE – IC-M</small>	<small>PREREQUISITE – ENG 101 and COM 110, IC Completed</small>	<small>HIS/SOA 111 – 3 hrs HIS/SOA/FCS 112 – 3 hrs HIS 131 – 3 hrs SOA 109 – 3 hrs</small>	<small>CIS 102 – 3 hrs POL 101 – 3 hrs POL 106 – 3 hrs</small>	<small>ANT 175 – 3 hrs GEO 140 – 3 hrs PSY 110 – 3 hrs SOA 108 – 3 hrs</small>
<small>Outer Core General Education – Undergraduate Catalog, Page 66-67 Remember to check for your Gen Ed options Global Studies Graduation Requirement Course indicated with ** on page 67 of your Undergraduate Catalog</small>				
<small>OC – SMF: <i>Outer Core Science, Math and Technology</i></small>	<small>OC-SS: <i>Outer Core Social Sciences</i></small>	<small>OC-FA: <i>Outer Core Fine Arts</i></small>	<small>OC – H: <i>Outer Core Humanities</i></small>	
<small>GEO 202 – 3 hrs GEO 207 – 3 hrs GEO 211 – 3 hrs HSC 156 – 3 hrs</small>	<small>GEO 135** – 3 hrs HSC 170 – 3 hrs POL 140** – 3 hrs SOA 220** – 3 hrs SOA 240 – 3 hrs</small>	<small>MUS 152 – 3 hrs MUS 153** – 3 hrs THE 152 – 3 hrs</small>	<small>HIS 104,xx** – 3 hrs PHI 101 – 3 hrs</small>	
<small>Additional Course Options Outside of General Education</small>				
<small>Major Courses</small>	<small>Foreign Language</small>	<small>Electives</small>	<small>Freshman Seminars</small>	
<small>See Slide</small>	<small>Catalog Page 191</small>	<small>SOA 106 – 3 hrs KNR Courses IDS 106 – Career Choice – 1 hr</small>	<small>IDS 122 – LInC, 1 hr – 8 weeks IDS 108 – Success 101, 2 hr</small>	

We help students succeed

Planning Worksheet:

Inner Core COM and ENG

COM 110

- **Class Size = 23**
- **3 Hours/Week**
- **1 Instructor**
- **What to Expect:**
 - **Learn to communicate effectively in group settings**
 - **Build your public speaking skills**

ENG 101

- **Class Size = 23**
- **3 Hours/Week**
- **1 Instructor**
- **Student Profile:**
 - **Read Regularly for school and pleasure**
 - **Discipline and motivation**
 - **Consider themselves good readers and writers**

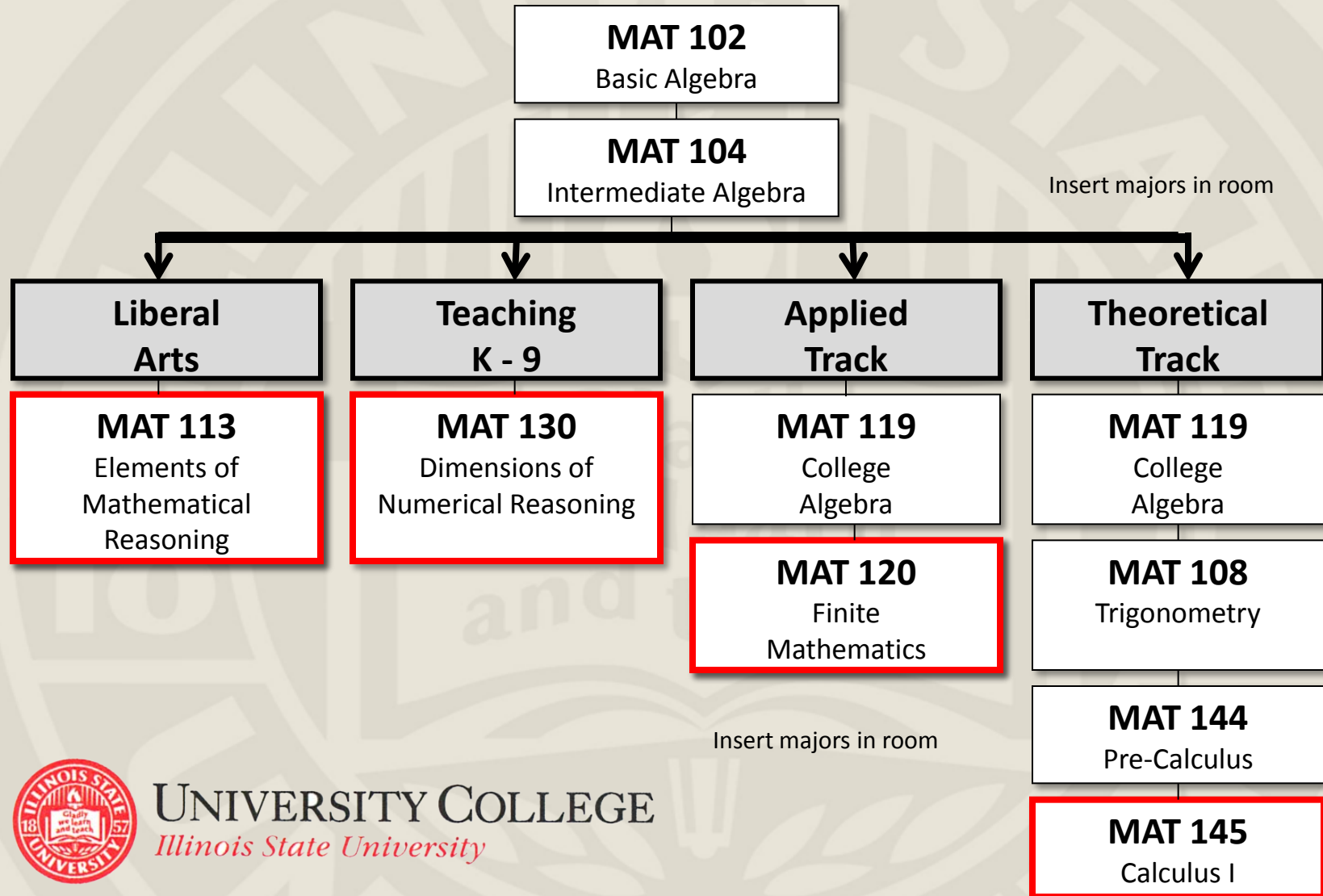
ENG 101.10

- **Class Size = 18**
- **5 Hours/Week**
- **1 Instructor and 1 Writing Consultant**
- **Student Profile:**
 - **Read only when required**
 - **Need assistance getting started and staying on task**
 - **Do not consider themselves good readers and writers**

We help students succeed

Planning Worksheet:

Inner Core Math



MATH PLACEMENT SCORES

Course	Compass Scores needed
MAT 102	Algebra 1-26
MAT 104	Algebra 26-99 and Pre-Algebra 46-99
MAT 130	Algebra 47-99
MAT 119	Algebra 47-99
MAT 113	Algebra 47-99
MAT 108, 120, 121	Algebra 55-99 and College Algebra 46-99 or Algebra 50-99 and College Algebra 50-99
MAT 144	College Algebra 55-99 and Trigonometry 35-99
MAT 145	College Algebra 55-99 and Trigonometry 46-99

We help students succeed

Planning Worksheet:

Inner Core Science

Atoms to Galaxies – PHY 102

- PHY 105, 108, 110

Chemistry & Society – CHE 102

- CHE 110/112, 140

Fundamental Concepts in Biology – BSC 101

- BSC 196, 197

Principles of Geology – GEO 102

- No Alternative

We help students succeed

Planning Worksheet:

Middle Core

Inner Core General Education – Undergraduate Catalog Page 65				
IC Required: ENG/COM	Math		IC-NS Inner Core Science	
COM 110 – 3 hrs ENG 101 – 3 hrs ENG 101.10 – 3 hrs	Prerequisite Courses: MAT 102 – 4 hrs (CR/NC) MAT 104 – 3 hrs (CR/NC) MAT 119 – 3 hrs MAT 108 – 2 hrs MAT 144 – 4 hrs	Inner Core Math Courses: MAT 113 – 4 hrs MAT 130 – 3 hrs MAT 120 – 4 hrs MAT 145 – 4 hrs	Natural Science: BSC 101 – 3 hrs CHE 102 – 3 hrs GEO 102 – 3 hrs PHY 102 – 3 hrs	Natural Science Alternatives: BSC 197 – 4 hrs CHE 110/112 – 5 hrs CHE 140 – 4 hrs PHY 105 – 4 hrs PHY 108 – 5 hrs PHY 110 – 4 hrs
Middle Core General Education – Catalog Page 65-66: Remember to check for your Gen Ed Exemption				
MC – QR <i>Middle Core Quantitative Reasoning</i>	MC – LH <i>Middle Core Language in the Humanities</i>	MC-UST: <i>Middle Core United States Traditions</i>	MC-ICL: <i>Middle Core Individuals & Civic Life</i>	MC-IS: <i>Middle Core Individuals & Society</i>
PREREQUISITE – IC-M	PREREQUISITE – ENG 101 and COM 110; IC Completed	HIS/SOA 111 – 3 hrs HIS/SOA/FCS 112 – 3 hrs HIS 131 – 3 hrs SOA 109 – 3 hrs	CJS 102 – 3 hrs POL 101 – 3 hrs POL 106 – 3 hrs	ANT 175 – 3 hrs GEO 140 – 3 hrs PSY 110 – 3 hrs SOA 108 – 3 hrs
<small>Remember to check for your Gen Ed options Global Studies Graduation Requirement Course indicated with ** on page 67 of your Undergraduate Catalog</small>				
OC – SMT: <i>Outer Core Science, Math and Technology</i>	OC-SS: <i>Outer Core Social Sciences</i>	OC-FA: <i>Outer Core Fine Arts</i>	OC – H: <i>Outer Core Humanities</i>	
GEO 202 – 3 hrs GEO 207 – 3 hrs GEO 211 – 3 hrs HSC 156 – 3 hrs	GEO 135** - 3 hrs HSC 170 – 3 hrs POL 140** - 3 hrs SOA 220** - 3 hrs SOA 240 – 3 hrs	MUS 152 – 3 hrs MUS 153** - 3 hrs THE 152 – 3 hrs	HIS 104** - 3 hrs PHI 101 – 3 hrs	
Additional Course Options Outside of General Education				
Major Courses	Foreign Language	Electives		Freshman Seminars
See Slide	Catalog Page 191	SOA 106 – 3 hrs KNR Courses IDS 106 – Career Choice – 1 hr		IDS 122 – LInC, 1 hr – 8 weeks IDS 108 – Success 101, 2 hr

We help students succeed

Planning Worksheet:

Outer Core

Inner Core General Education – Undergraduate Catalog Page 65				
IC Required: ENG/COM	Math		IC-NS Inner Core Science	
COM 110 – 3 hrs ENG 101 – 3 hrs ENG 101.10 – 3 hrs	Prerequisite Courses: MAT 102 – 4 hrs (CR/NC) MAT 104 – 3 hrs (CR/NC) MAT 119 – 3 hrs MAT 108 – 2 hrs MAT 144 – 4 hrs	Inner Core Math Courses: MAT 113 – 4 hrs MAT 130 – 3 hrs MAT 120 – 4 hrs MAT 145 – 4 hrs	Natural Science: BSC 101 – 3 hrs CHE 102 – 3 hrs GEO 102 – 3 hrs PHY 102 – 3 hrs	Natural Science Alternatives: BSC 197 – 4 hrs CHE 110/112 – 5 hrs CHE 140 – 4 hrs PHY 105 – 4 hrs PHY 108 – 5 hrs PHY 110 – 4 hrs
Middle Core General Education – Catalog Page 65-66: Remember to check for your Gen Ed Exemption				
MC – QR <i>Middle Core Quantitative Reasoning</i>	MC – LH <i>Middle Core Language in the Humanities</i>	MC-UST: <i>Middle Core United States Traditions</i>	MC-ICL: <i>Middle Core Individuals & Civic Life</i>	MC-IS: <i>Middle Core Individuals & Society</i>
PREREQUISITE – IC-M	PREREQUISITE – ENG 101 and COM 110; IC Completed	HIS/SOA 111 – 3 hrs HIS/SOA/FCS 112 – 3 hrs HIS 131 – 3 hrs SOA 109 – 3 hrs	CIS 102 – 3 hrs POL 101 – 3 hrs POL 106 – 3 hrs	ANT 175 – 3 hrs GEO 140 – 3 hrs PSY 110 – 3 hrs SOA 108 – 3 hrs
Outer Core General Education – Undergraduate Catalog Page 66-67 Remember to check for your Gen Ed options Global Studies Graduation Requirement Course indicated with ** on page 67 of your Undergraduate Catalog				
OC – SMT: <i>Outer Core Science, Math and Technology</i>	OC-SS: <i>Outer Core Social Sciences</i>	OC-FA: <i>Outer Core Fine Arts</i>	OC – H: <i>Outer Core Humanities</i>	
GEO 202 – 3 hrs GEO 207 – 3 hrs GEO 211 – 3 hrs HSC 156 – 3 hrs	GEO 135** - 3 hrs HSC 170 – 3 hrs POL 140** - 3 hrs SOA 220** - 3 hrs SOA 240 – 3 hrs	MUS 152 – 3 hrs MUS 153** - 3 hrs THE 152 – 3 hrs	HIS 104.xx** - 3 hrs PHI 101 – 3 hrs	
Additional Course Options Outside of General Education				
Major Courses	Foreign Language	Electives		Freshman Seminars
See Slide	Catalog Page 191	SOA 106 – 3 hrs KNR Courses IDS 106 – Career Choice – 1 hr	IDS 122 – Linc, 1 hr – 8 weeks IDS 108 – Success 101, 2 hr	

We help students succeed

Planning Worksheet: Additional Course Options

Inner Core General Education – Undergraduate Catalog Page 65				
IC Required: ENG/COM		Math		IC-NS Inner Core Science
COM 110 – 3 hrs ENG 101 – 3 hrs ENG 101.10 – 3 hrs	Prerequisite Courses: MAT 102 – 4 hrs (CR/NC) MAT 104 – 3 hrs (CR/NC) MAT 119 – 3 hrs MAT 108 – 2 hrs MAT 144 – 4 hrs	Inner Core Math Courses: MAT 113 – 4 hrs MAT 130 – 3 hrs MAT 120 – 4 hrs MAT 145 – 4 hrs	Natural Science: BSC 101 – 3 hrs CHE 102 – 3 hrs GEO 102 – 3 hrs PHY 102 – 3 hrs	Natural Science Alternatives: BSC 197 – 4 hrs CHE 110/112 – 5 hrs CHE 140 – 4 hrs PHY 105 – 4 hrs PHY 108 – 5 hrs PHY 110 – 4 hrs
Middle Core General Education – Catalog Page 65-66: Remember to check for your Gen Ed Exemption				
MC – QR Middle Core Quantitative Reasoning	MC – LH Middle Core Language in the Humanities	MC-UST: Middle Core United States Traditions	MC-ICL: Middle Core Individuals & Civic Life	MC-IS: Middle Core Individuals & Society
PREREQUISITE – IC-M	PREREQUISITE – ENG 101 and COM 110, IC Completed	HIS/SOA 111 – 3 hrs HIS/SOA/FCS 112 – 3 hrs HIS 131 – 3 hrs SOA 109 – 3 hrs	CIS 102 – 3 hrs POL 101 – 3 hrs POL 106 – 3 hrs	ANT 175 – 3 hrs GEO 140 – 3 hrs PSY 110 – 3 hrs SOA 108 – 3 hrs
Outer Core General Education – Undergraduate Catalog Page 66-67 Remember to check for your Gen Ed options Global Studies Graduation Requirement Course indicated with ** on page 67 of your Undergraduate Catalog				
OC – SMT: Outer Core Science, Math and Technology	OC-SS: Outer Core Social Sciences	OC-FA: Outer Core Fine Arts	OC – H: Outer Core Humanities	
GEO 202 – 3 hrs GEO 207 – 3 hrs GEO 211 – 3 hrs HSC 156 – 3 hrs	GEO 135** – 3 hrs HSC 170 – 3 hrs POL 140** – 3 hrs SOA 220** – 3 hrs SOA 240 – 3 hrs	MUS 152 – 3 hrs MUS 153** – 3 hrs THE 152 – 3 hrs	HIS 104,xx** – 3 hrs PHI 101 – 3 hrs	
Additional Course Options Outside of General Education				
Major Courses	Foreign Language	Electives		Freshman Seminars
Discuss with Advisor	Catalog Page 191	SOA 106 – 3 hrs KNR Courses: Catalog pp 128-129 IDS 106 – Career Choice – 1 hr		IDS 122 – LinC, 1 hr – 8 weeks IDS 108 – Success 101 - 2 hr

We help students succeed

Planning Worksheet:

Major Specific Information

Major – Major Classes

Major – Major Classes

Major – Major Classes

Major – Major Classes

We help students succeed

Advising

Mentoring

Testing

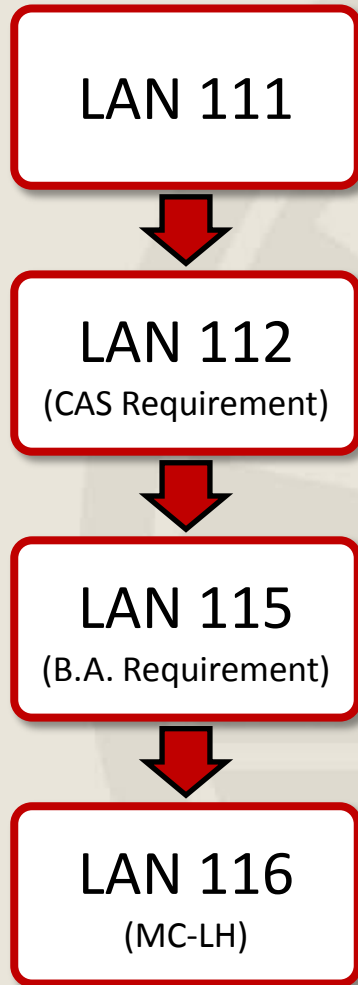
University College

Comprehensive academic support programs

Teaching

Planning Worksheet:

Foreign Language Placement



Who needs Foreign Language?

- B.A. Degree
- College of Arts & Sciences

How to meet the requirements?

- B.A. Degree – LAN 115
- College of Arts & Sciences
 - 3 years of one language in H.S. or
 - Complete LAN 112
- Proficiency Test

We help students succeed

FOREIGN LANGUAGE CAP CREDIT

Class	Credit Hours	Years of H.S. FOR LAN	CAP Credit (must apply)	Total Credit
LAN 111	4	0 to 1 years	0	4
LAN 112	4	2 years	4	8
LAN 115	4	3 years	8	12
LAN 116	4	4+ years	8	12

We help students succeed

Mentoring

Testing

University College

Comprehensive academic support programs

Teaching

Advising

Registration Options:

IDS 122 – First Year LinC

Learning in Communities

- 8-week seminar
- Meets 2 times a week
- 1 credit hour



University
Resources
&
Transition
from High
School to
College

Civic
Engagement
&
Campus
Involvement

Major/Minor
&
Career
Exploration

We help students succeed

Registration Options:

IDS 108 – Success 101

- 16 weeks
- Meets 2 times a week
- 2 credit hours



Seminar focusing on transitioning to college, helpful for first generation college students



Students are assigned a mentor, financial aid counselor & academic advisor



Pre-Enrolled in Success 101 sections of GEO 102 and COM 110 to encourage community

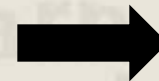
We help students succeed

Planning Worksheet:

Preparing for Registration Tomorrow

Tonight:

- Consider desired amount of hours
- Rank Inner Core Science options
- Select Major Courses using Catalog
- Review placement for Math & English
- Decide on a 4 digit PIN



Tomorrow:

- Be on time, alert, and ready to make decisions
- Bring Catalog, Planning Sheet & Advising Syllabus
- Bring your patience & flexibility


We help students succeed


Textbook Considerations:

- Caution when using internet sites
- Buy back policies
- Refund policy
- Items in stock/current editions
- Condition of books
- Required vs. recommended
- Shared Experience Program
- eBooks
- Renting Textbooks
- Textbook Financing Through Bookstores

We help students succeed

iCampus Portal: Registration Log-in & Check-out

Admissions Academics Campus Events Campus Map Campus A-Z 



sign in using
CentralLogin

ULID:

Password:

[Login](#)

Remember, verify that the address bar always begins with <https://centrallogin.illinoisstate.edu> before you log in.

For security reasons, please Log Out and Exit your web browser when you are done accessing services that require authentication!

[ULID Activation](#) | [ULID Password Changes](#) | [ULID Password Self-Reset](#)

Your Password must be 8 – 12 characters and have 1 number and 1 letter.

Your ULID is made up of your First, Middle and Last Name up to 7 characters

We help students succeed

Advising Information

- To review this presentation, please visit the University College Website:
 - www.ucollege.ilstu.edu
- Please remember that we are accessible after tomorrow via our email addresses
- Advisor may shift at the end of summer
- Meet with your advisor or academic peer advisor at least once in the Fall semester

We help students succeed

Before the Session Ends

1. Questions!!!

2. Individual Time with Advisor

- *Please turn in folder and Math Placement Sheet*
- *Please discuss any summer courses or AP work*

3. Check ULID's and Passwords before you leave

4. Next session begins at 2:35 pm

Thank you for your time!

We help students succeed

What's Next?

Departmental Breakout Sessions:

**College of Business
Majors:
COB 139**

**Undeclared
Students:
COB 354**

**All other majors:
Pages 12-13 in
Preview Schedule
Book**

**** If you are interested in more than one department, students and guests are encouraged to split up and attend different sessions at this time****

We help students succeed



UNIVERSITY COLLEGE
Illinois State University

Thank you for attending!

We help students succeed

Advising

Mentoring

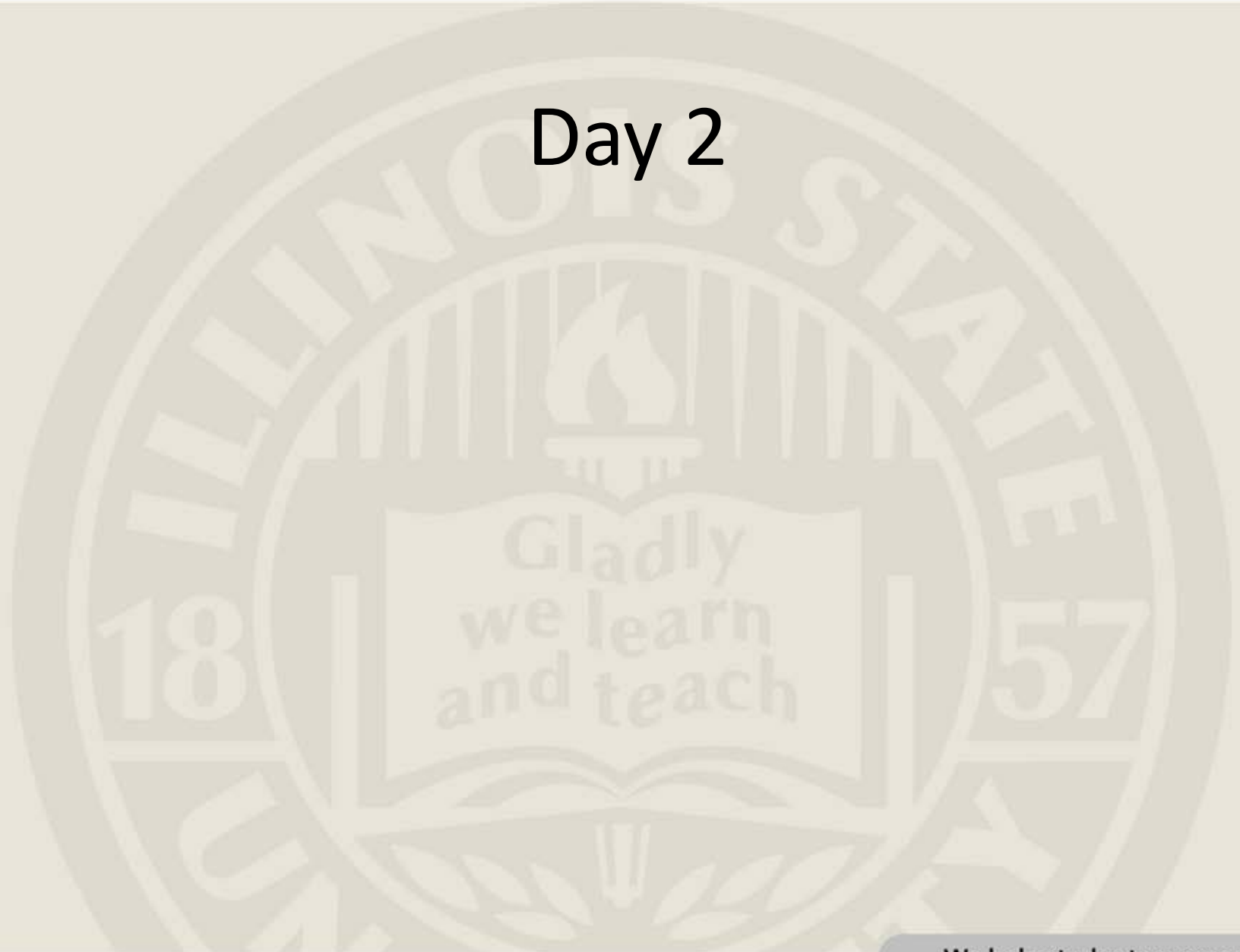
Testing

University College

Comprehensive academic support programs

Teaching

Day 2



We help students succeed

Please find your seat and be prepared with the following materials:

Schedule Planning Sheet

University Catalog

Pen/Pencil

UID, PIN Number, ULID


(Located on Planning Sheet)

Password


We help students succeed

Registration Day!

Begin by logging in to iCampus

Admissions Academics Campus Events Campus Map Campus A-Z 

ILLOIS STATE
UNIVERSITY
most public university

 sign in using
CentralLogin

ULID:

Password:

[Login](#)

Remember, verify that the address bar always begins with <https://centrallogin.illinoisstate.edu> before you log in.

For security reasons, please Log Out and Exit your web browser when you are done accessing services that require authentication!

Your Password must be 8 – 12 characters and have 1 number and 1 letter.

Your ULID is made up of your First, Middle and Last Name up to 7 characters

[ULID Activation](#) | [ULID Password Changes](#) | [ULID Password Self-Reset](#)

We help students succeed

Click on "Academics" Tab

Then select "Course Registration"

The screenshot shows the iCAMPUS website interface. At the top left is the iCAMPUS logo. Below it is a navigation bar with tabs for Home, Academics, Profile, Community, and News. The Academics tab is selected. Below the navigation bar is a header for 'academics' with options to 'Add a Channel', 'Page Layout', and 'Delete Tab'. The main content area is divided into several panels:

- Course Manager** (with a book icon):
 - My Class Schedule
 - Final Exam Schedule
 - My Grades
 - Course Offerings
 - Course Registration
- Academic Progress** (with a graduation cap icon):
 - You are in Good Academic Standing.
 - Progress Towards My Degree
 - Teacher Education PBA Requirements
 - GPA Estimator
- Academic Applications** (with a document icon):
 - Plan a Major Change
 - Apply to My Program
 - 75-Hour Appeal Application
- Blackboard** (with a mouse cursor icon):
 - Visit myBlackboard Home - Campus Bookmarks to access student orientation and other useful resources.
 - System Announcements
 - 4/5/10 - Java Security Update Message
 - 1/13/10 - Student Blackboard Support
 - 9/29/09 - Reminders from Faculty Support Personnel
 - 11/19/09 - Blackboard Outage and Service Interruption
 - 4/29/10 - How to Fix Grade Book Problems
 - My Current Courses
 - CTLT 101 - Reel
 - University College - Advisor Knowledge Assessment
 - CTLT CE6-8 User Support Forum - Ongoing forum
 - Please visit Blackboard Student Support for information and resources.
- Classroom Clicker** (with a calculator icon):
 - To make your classroom click response count, please register your unique clicker ID. This ID will be made available to your instructor.
 - You do not currently have a Clicker ID registered.
 - If the above is incorrect, please update below.
 - New Clicker ID:
 - Where do I find my Clicker ID?

Two red arrows with white text are overlaid on the image. The first arrow points to the 'Academics' tab and contains the text 'Step 1: Click Here!'. The second arrow points to the 'Course Registration' link in the Course Manager panel and contains the text 'Step 2: Click Here!'.

We help students succeed

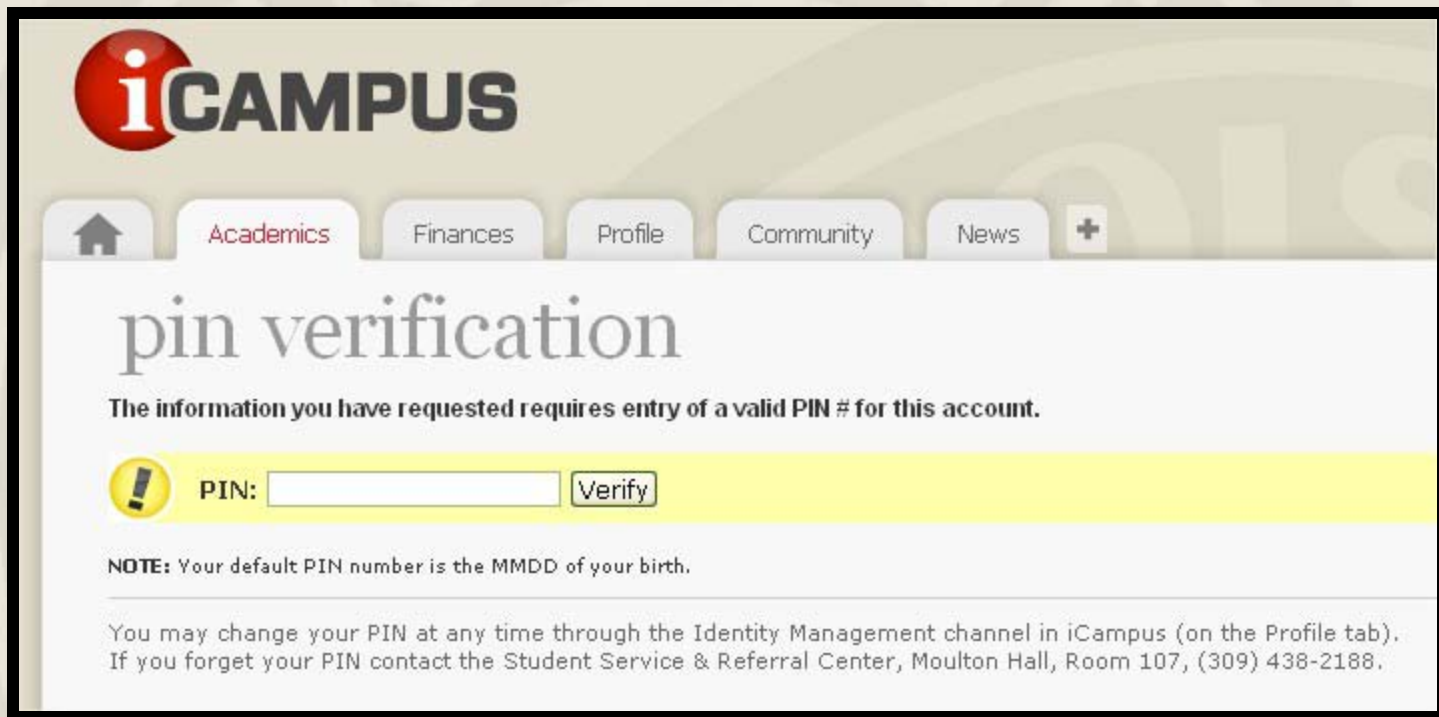
Mentoring
Advising
Testing

University College
Comprehensive academic support programs

Teaching

Insert your Default PIN Number:

Month/Day of Birth (ex. 0513 = May 13th)



The screenshot shows the iCAMPUS interface. At the top left is the iCAMPUS logo. Below it is a navigation bar with tabs for Home, Academics, Finances, Profile, Community, and News. The main content area is titled "pin verification" and contains the following text: "The information you have requested requires entry of a valid PIN # for this account." Below this is a yellow highlighted box containing a warning icon, the text "PIN:", an input field, and a "Verify" button. A "NOTE" section follows, stating: "Your default PIN number is the MMDD of your birth." At the bottom, there is a paragraph: "You may change your PIN at any time through the Identity Management channel in iCampus (on the Profile tab). If you forget your PIN contact the Student Service & Referral Center, Moulton Hall, Room 107, (309) 438-2188."

Then Re-Enter New PIN Number

We help students succeed

Select Fall 2011 Registration and begin selecting classes:

Registration Tips and Reminders:

- Use drop down menu to select courses
- Days of the week are abbreviated
- Select “Add Course” to register
- Be mindful of how many seats are left



Academics Finances Profile Community News +

course manager >> choose registration semester >>

course registration

My Schedule for (hours)

You are not registered for any courses in this semester.

Add a Course

Select a Department: MAT - Mathematics

Enter Course Number: 120 Leave blank to display all courses in the selected department.

Search

Sections for 120 - Finite Mathematics

Show all Mathematics courses

Section	Instructor	Location	Time	Days	Special Section	Add'l Info	Open Seats	Hours	Type	Course
001	Theodore D Fuller	Adlai E. Stevenson Hall 112	800- 950A	MTWR	Major		1	4.0	for Credit	Add Course
002		Adlai E. Stevenson Hall 126	800- 950A	MTWR			16	4.0	for Credit	Add Course

We help students succeed

Schedule Tips:

Sample Fall Schedule:

- COM 110 or ENG 101/101.10
- Math
- Science
- Major/General Education Course
- Major/General Education Course
- Elective of Choice

- **Must have 12 hours to be considered full time!**

Done Registering?

Check-out Procedure:

1. Return to iCampus “Home” tab
2. Click on “Emergency Contact Info” link
3. Enter your information
4. Raise hand and Advisor will check you out!

We help students succeed